

## Dredged Material Disposal Plan (DMDP) Site No. 22

RCP/ CRMP Plot No. 030

TRS Map: 18-12-25 Tax Lot(s): 2200, 2300

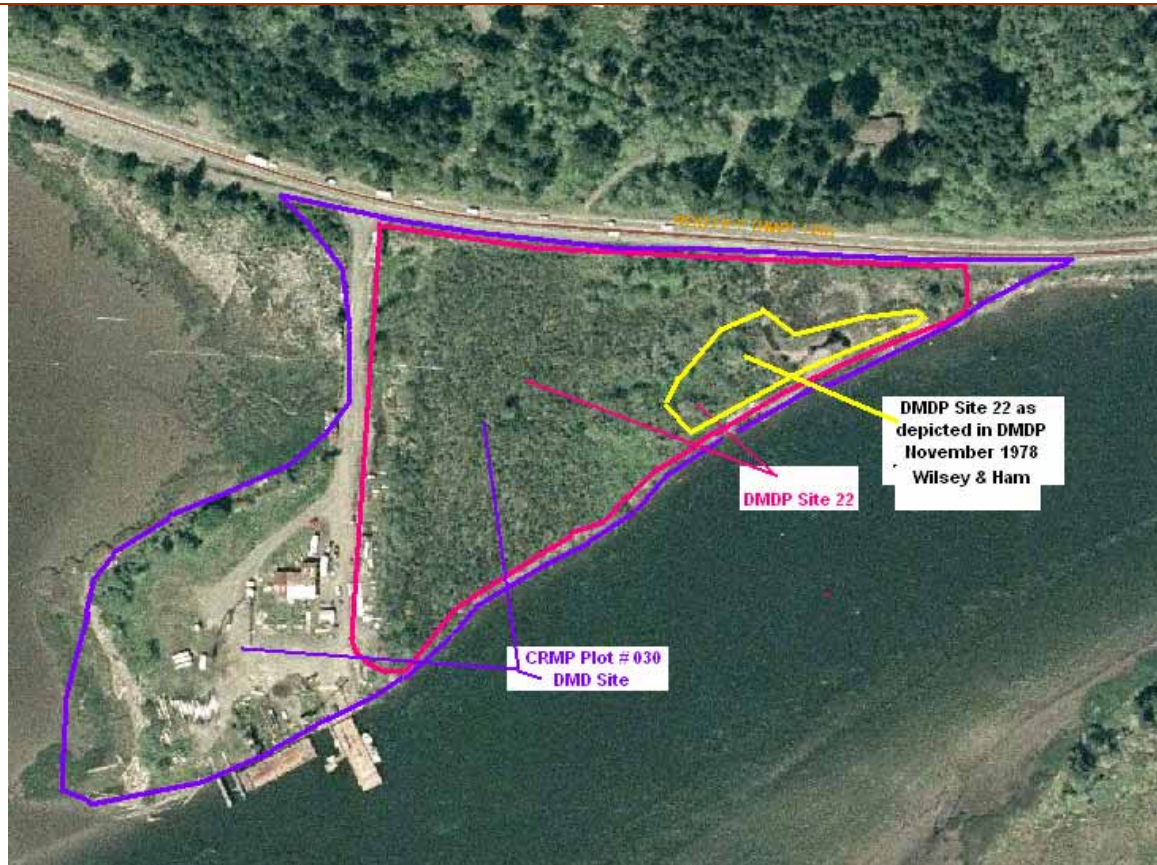
Location: "Johnson's Rock Products"

Vicinity: South of Highway 126, north of Siuslaw River; West of North Fork Siuslaw Bridge (Highway 126)

Base Zone: Rural Industrial (RI)

CRMP Combining Zone: Natural Resource Conservation /NRC (M. U. 10)

2004 aerial with site boundaries



### CRMP history:

1. The "Johnson's Rock Products site was initially (November 1978) 150' x 220' as depicted on page 52-53 of the Siuslaw River Dredged Material Disposal Plan, Wilsey-Ham, November 1978. Refer to yellow area above.
2. The site was amended by the Board of County Commissioners with the adoption of Ordinance No. 749 (October 18, 1979), Appendix "B", Item #2: "2. Enlargement of Site 22 to include fresh water marsh north of originally-proposed site, and small salt water marsh at east end of site." The description of the site was enlarged to "nine acres" with a capacity of "130,000 cubic yards". Refer to the **DMDP Site 22** as depicted in **magenta** above.
3. The Official Coastal Zones Plot #030 adopted in 1984 depicts an even larger "site" that includes the developed Rural Industrial land to the southwest as shown in **purple**, above.

"Old fill site, flat and riprapped on river side. Hard surface, some gravels." (DMDP 1978)



Vicinity of DMDP Site 22 Coastal Resource Management Plan zoning designations. Flood Hazard Areas: Light Blue = Floodplain; Darker Blue = Floodway. (Above)  
NWI delineated wetlands (Below) Pink = upland.



